



The University of Texas at Austin

Office of the Executive Vice President
and Provost

2021–2022

UT AUSTIN

DOCTORAL EXIT SURVEY RESULTS

PRESENTED SPRING 2023

In partnership with the Association of American
Universities Data Exchange

2021-22 UT AUSTIN DOCTORAL EXIT SURVEY RESULTS

PURPOSE OF DOCUMENT

This document shares the 2021-22 basic frequencies and percentages from this online survey.

The purpose of this document is to shed light on graduating doctoral student perceptions from the 2021-22 academic year. This report can be used by stakeholders to support decision making within The Graduate School.

On subsequent pages, table frequencies and percentages are displayed for every section of the survey: overall satisfaction, program quality, support, faculty mentoring/advising, professional development, climate/obstacles to success, and postgraduate plans.

Ad-hoc analyses and additional breakdowns of the survey data can be provided upon request to IRRIS@austin.utexas.edu.

BACKGROUND ON SURVEY

UT Austin continuously participates in the Doctoral Exit Survey, developed by the Association of American Universities Data Exchange (AAUDE). Results from this survey are shared with AAUDE to provide all AAU schools with an understanding of the university climate for doctoral students.

The survey is posted on UT Austin's Graduate School website. The survey remains open all year, so that doctoral students can complete the survey at any time prior to completion of their doctoral degree.

BACKGROUND ON SURVEY PARTICIPANTS

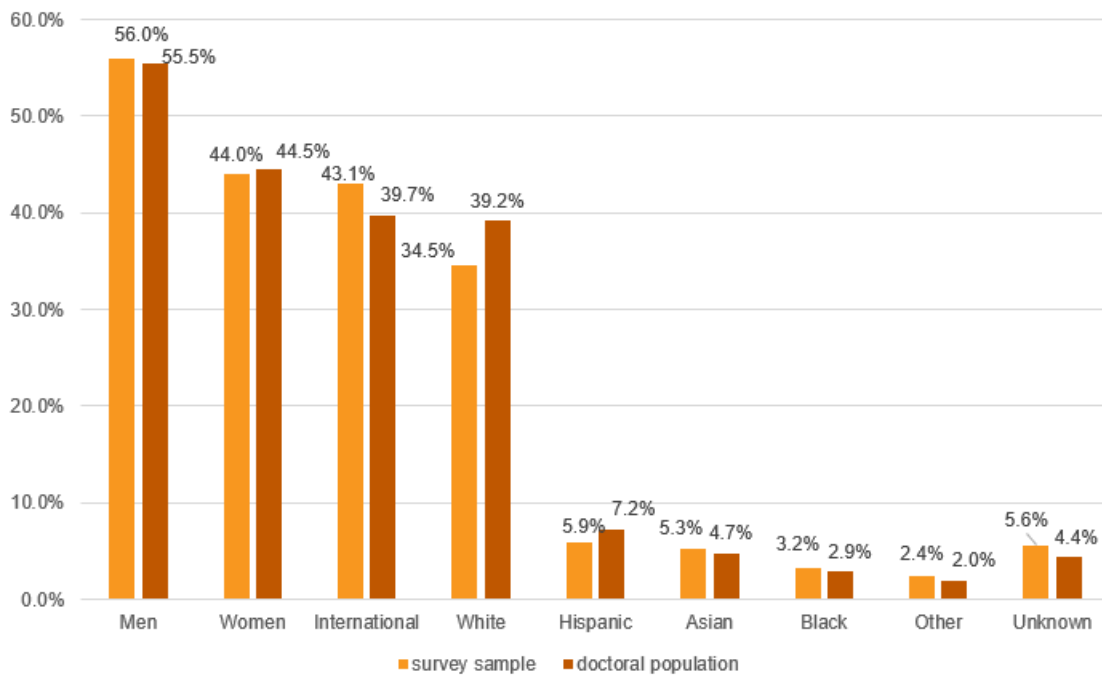
This survey is open to all doctoral candidates at UT Austin.

During the 2021-22 academic year, 339 doctoral candidates responded to the survey out of 871 doctoral candidates who earned their degree during this year (38.9% response rate). The response rate is lower than previous years because the survey was updated mid-academic year to incorporate changes made by AAUDE and the Graduate School. The results only include those who completed the new version of the survey; so, those who completed the previous version of the survey were not included in this year's analyses. In future years, we expect to yield a higher response rate.

Respondents represent 71 different fields of study. The programs with the most respondents were: Electrical and Computer Engineering (n=30), Chemical Engineering (n=18), Educational Psychology (16) and Physics (n=15). See the appendix for a full list of programs represented and the number of respondents per program.

The sample is fairly representative of recent doctoral graduates with regards to demographics, as outlined in the graph below. However, there is a 3.4% overrepresentation of international students. Additionally, there is a 4.7% underrepresentation of white students.

2021-22 Representation by Gender, Race, & Ethnicity

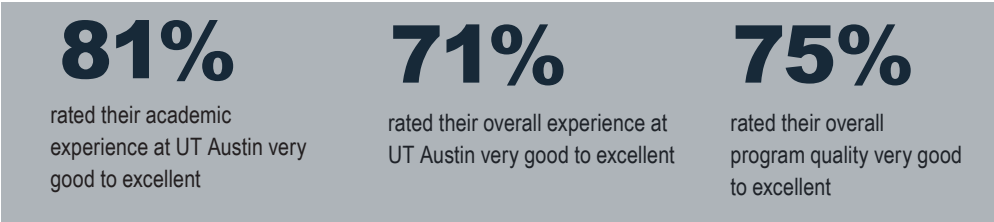


The race and gender categories in the figure above are based on IPEDS definitions of race and gender. The 'Other' race category represents American Indian/Alaska Native, Native Hawaiian/Other Pacific Islander, and those who identify as two or more races.

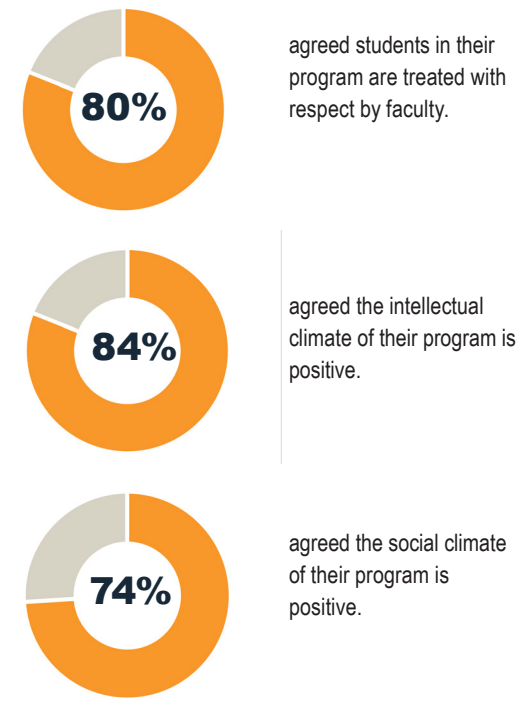
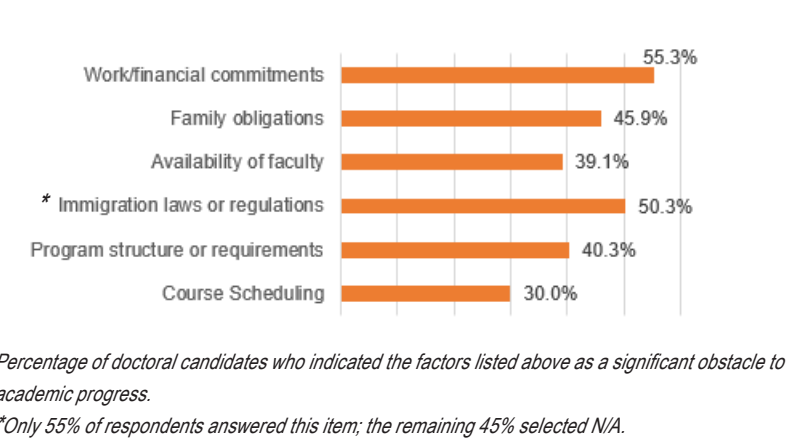
Doctoral students are encouraged to complete the Doctoral Exit Survey right before their graduation. Three of the 339 doctoral candidates who completed the survey this academic year did not officially graduate this year. IRRIS chose to include their responses regardless to capture their sentiments about their doctoral experience.

HIGHLIGHTS

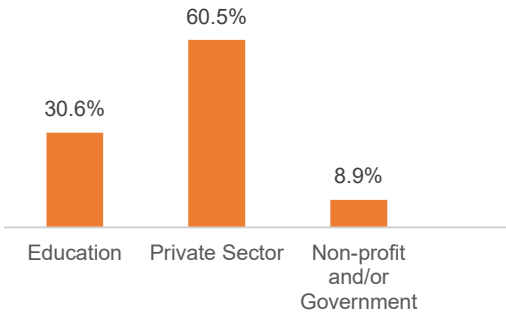
Overall Experience



Obstacles and Climate



Postgraduate Plans



Responses to 'what type of principal employer will you be working for (or training with) in the next year?'

This question was only presented to those who selected 'signed a contract/made definite commitment for other work' or 'returning to or continuing in predoctoral employment' when asked the status of their post-doc plans. (N=157)

RESULTS: BASIC FREQUENCIES AND PERCENTAGES

The following tables outline basic frequencies and percentages for every survey item.

Overall Satisfaction

Please rate your overall satisfaction with each of the following: Your academic experience at this university

		Frequency	Percent including missing data	Percent excluding missing data
Valid	Excellent	123	36.3	36.3
	Very good	152	44.8	44.8
	Good	44	13.0	13.0
	Fair	17	5.0	5.0
	Poor	3	.9	.9
	Total	339	100.0	100.0

Please rate your overall satisfaction with each of the following: Your student life experience at this university

		Frequency	Percent including missing data	Percent excluding missing data
Valid	Excellent	87	25.7	25.7
	Very good	131	38.6	38.6
	Good	72	21.2	21.2
	Fair	40	11.8	11.8
	Poor	9	2.7	2.7
	Total	339	100.0	100.0

Please rate your overall satisfaction with each of the following: Your overall experience at this university

		Frequency	Percent including missing data	Percent excluding missing data
Valid	Excellent	96	28.3	28.3
	Very good	143	42.2	42.2
	Good	78	23.0	23.0
	Fair	19	5.6	5.6
	Poor	3	.9	.9
	Total	339	100.0	100.0

If you were to start your doctoral career again: Would you select this same university?

		Frequency	Percent including missing data	Percent excluding missing data
Valid	Definitely	158	46.6	46.6
	Probably	108	31.9	31.9
	Maybe	49	14.5	14.5
	Probably not	17	5.0	5.0
	Definitely not	7	2.1	2.1
	Total	339	100.0	100.0

If you were to start your doctoral career again: Would you select the same field of study?

Frequency			Percent including missing data	Percent excluding missing data
Valid	Definitely	201	59.3	59.3
	Probably	79	23.3	23.3
	Maybe	39	11.5	11.5
	Probably not	17	5.0	5.0
	Definitely not	3	.9	.9
	Total	339	100.0	100.0

If you were to start your doctoral career again: Would you recommend this university to someone considering your field of study?

Frequency			Percent including missing data	Percent excluding missing data
Valid	Definitely	182	53.7	53.7
	Probably	88	26.0	26.0
	Maybe	45	13.3	13.3
	Probably not	15	4.4	4.4
	Definitely not	9	2.7	2.7
	Total	339	100.0	100.0

Program Quality

When you first enrolled as a doctoral student, did your department or program provide an orientation to explain the process of completing your doctoral degree?

		Frequency	Percent including missing data	Percent excluding missing data
Valid	Yes, and I attended.	293	86.4	86.4
	Yes, but I did not attend.	9	2.7	2.7
	No	14	4.1	4.1
	Don't know	23	6.8	6.8
	Total	339	100.0	100.0

How effective was this orientation in helping you to understand the process of completing your doctoral degree?

		Frequency	Percent including missing data	Percent excluding missing data
Valid	Very effective	101	29.8	34.5
	Somewhat effective	136	40.1	46.4
	Neither effective nor ineffective	31	9.1	10.6
	Somewhat ineffective	17	5.0	5.8
	Very ineffective	8	2.4	2.7
	Total	293	86.4	100.0
Missing	System	46	13.6	
Total		339	100.0	

Did your doctoral program provide you with a written set of expectations about academic requirements and expected progress?

		Frequency	Percent including missing data	Percent excluding missing data
Valid	Yes	296	87.3	87.6
	No	28	8.3	8.3
	Don't know	14	4.1	4.1
	Total	338	99.7	100.0
Missing	System	1	.3	
Total		339	100.0	

Other than course grades and results of written or oral examinations, did your doctoral program provide a formal assessment of your academic progress at least annually?

		Frequency	Percent including missing data	Percent excluding missing data
Valid	Yes	234	69.0	69.0
	No	77	22.7	22.7
	Don't know	28	8.3	8.3
	Total	339	100.0	100.0

Please rate the following aspects of your doctoral program: Quality of the graduate curriculum

		Frequency	Percent including missing data	Percent excluding missing data
Valid	Excellent	106	31.3	31.3
	Very good	144	42.5	42.5
	Good	60	17.7	17.7
	Fair	25	7.4	7.4
	Poor	4	1.2	1.2
	Total	339	100.0	100.0

Please rate the following aspects of your doctoral program: Quality of graduate-level teaching by faculty

		Frequency	Percent including missing data	Percent excluding missing data
Valid	Excellent	129	38.1	38.2
	Very good	128	37.8	37.9
	Good	55	16.2	16.3
	Fair	20	5.9	5.9
	Poor	6	1.8	1.8
	Total	338	99.7	100.0
Missing	System	1	.3	
Total		339	100.0	

Please rate the following aspects of your doctoral program: Quality of academic advising and guidance

		Frequency	Percent including missing data	Percent excluding missing data
Valid	Excellent	141	41.6	41.6
	Very good	99	29.2	29.2
	Good	49	14.5	14.5
	Fair	30	8.8	8.8
	Poor	20	5.9	5.9
	Total	339	100.0	100.0

Please rate the following aspects of your doctoral program: Preparation for candidacy/comprehensive examinations (coursework, seminars, labs, reading courses, etc.)

		Frequency	Percent including missing data	Percent excluding missing data
Valid	Excellent	119	35.1	35.1
	Very good	116	34.2	34.2
	Good	60	17.7	17.7
	Fair	34	10.0	10.0
	Poor	10	2.9	2.9
	Total	339	100.0	100.0

Please rate the following aspects of your doctoral program: The opportunity to collaborate across disciplines

		Frequency	Percent including missing data	Percent excluding missing data
Valid	Excellent	97	28.6	28.7
	Very good	105	31.0	31.1
	Good	79	23.3	23.4
	Fair	37	10.9	10.9
	Poor	20	5.9	5.9
	Total	338	99.7	100.0
Missing	System	1	.3	
Total		339	100.0	

Please rate the following aspects of your doctoral program: Assistance in finding employment

Frequency			Percent including missing data	Percent excluding missing data
Valid	Excellent	89	26.3	26.6
	Very good	90	26.5	26.9
	Good	93	27.4	27.8
	Fair	35	10.3	10.4
	Poor	28	8.3	8.4
	Total	335	98.8	100.0
Missing	System	4	1.2	
Total		339	100.0	

Please rate the following aspects of your doctoral program: Overall program quality

Frequency			Percent including missing data	Percent excluding missing data
Valid	Excellent	107	31.6	31.6
	Very good	146	43.1	43.1
	Good	60	17.7	17.7
	Fair	22	6.5	6.5
	Poor	4	1.2	1.2
	Total	339	100.0	100.0

Support

Please rate the adequacy of the support you were provided during your doctoral education and dissertation research in the following areas: **Financial support**

Frequency			Percent including missing data	Percent excluding missing data
Valid	Excellent	85	25.1	26.1
	Very good	85	25.1	26.1
	Good	74	21.8	22.7
	Fair	40	11.8	12.3
	Poor	42	12.4	12.9
	Total	326	96.2	100.0
Missing	System	13	3.8	
Total		339	100.0	

Please rate the adequacy of the support you were provided during your doctoral education and dissertation research in the following areas: **Information technology (IT) resources**

Frequency			Percent including missing data	Percent excluding missing data
Valid	Excellent	95	28.0	29.3
	Very good	107	31.6	33.0
	Good	83	24.5	25.6
	Fair	27	8.0	8.3
	Poor	12	3.5	3.7
	Total	324	95.6	100.0
Missing	System	15	4.4	
Total		339	100.0	

Please rate the adequacy of the support you were provided during your doctoral education and dissertation research in the following areas: Your personal workspace (e.g., desk or office)

		Frequency	Percent including missing data	Percent excluding missing data
Valid	Excellent	96	28.3	29.9
	Very good	90	26.5	28.0
	Good	68	20.1	21.2
	Fair	38	11.2	11.8
	Poor	29	8.6	9.0
	Total	321	94.7	100.0
Missing	System	18	5.3	
Total		339	100.0	

Please rate the adequacy of the support you were provided during your doctoral education and dissertation research in the following areas: Library and electronic research resources

		Frequency	Percent including missing data	Percent excluding missing data
Valid	Excellent	192	56.6	57.0
	Very good	100	29.5	29.7
	Good	39	11.5	11.6
	Fair	6	1.8	1.8
	Total	337	99.4	100.0
Missing	System	2	.6	
Total		339	100.0	

Please rate the adequacy of the support you were provided during your doctoral education and dissertation research in the following areas: Laboratory, clinical, studio, or other physical facilities

		Frequency	Percent including missing data	Percent excluding missing data
Valid	Excellent	106	31.3	44.5
	Very good	65	19.2	27.3
	Good	47	13.9	19.7
	Fair	9	2.7	3.8
	Poor	11	3.2	4.6
	Total	238	70.2	100.0
Missing	System	101	29.8	
Total		339	100.0	

Faculty Mentoring and Advising

How helpful was the advice you received from your dissertation/thesis adviser in each of these areas?

- Selection of a dissertation topic

		Frequency	Percent including missing data	Percent excluding missing data
Valid	Very helpful	231	68.1	69.8
	Somewhat helpful	79	23.3	23.9
	Not very helpful	15	4.4	4.5
	Not helpful at all	6	1.8	1.8
	Total	331	97.6	100.0
Missing	System	8	2.4	
Total		339	100.0	

How helpful was the advice you received from your dissertation/thesis adviser in each of these areas? - Your dissertation research

		Frequency	Percent including missing data	Percent excluding missing data
Valid	Very helpful	232	68.4	69.0
	Somewhat helpful	82	24.2	24.4
	Not very helpful	15	4.4	4.5
	Not helpful at all	7	2.1	2.1
	Total	336	99.1	100.0
Missing	System	3	.9	
Total		339	100.0	

How helpful was the advice you received from your dissertation/thesis adviser in each of these areas?
- Writing and revising your dissertation

		Frequency	Percent including missing data	Percent excluding missing data
Valid	Very helpful	236	69.6	70.0
	Somewhat helpful	68	20.1	20.2
	Not very helpful	24	7.1	7.1
	Not helpful at all	9	2.7	2.7
	Total	337	99.4	100.0
Missing	System	2	.6	
Total		339	100.0	

How helpful was the advice you received from your dissertation/thesis adviser in each of these areas?
- Academic career options

		Frequency	Percent including missing data	Percent excluding missing data
Valid	Very helpful	202	59.6	66.4
	Somewhat helpful	70	20.6	23.0
	Not very helpful	23	6.8	7.6
	Not helpful at all	9	2.7	3.0
	Total	304	89.7	100.0
Missing	System	35	10.3	
Total		339	100.0	

How helpful was the advice you received from your dissertation/thesis adviser in each of these areas?
- Nonacademic career options

		Frequency	Percent including missing data	Percent excluding missing data
Valid	Very helpful	118	34.8	42.0
	Somewhat helpful	95	28.0	33.8
	Not very helpful	45	13.3	16.0
	Not helpful at all	23	6.8	8.2
	Total	281	82.9	100.0
Missing	System	58	17.1	
Total		339	100.0	

How helpful was the advice you received from your dissertation/thesis adviser in each of these areas?
- Search for employment or training

		Frequency	Percent including missing data	Percent excluding missing data
Valid	Very helpful	155	45.7	49.8
	Somewhat helpful	106	31.3	34.1
	Not very helpful	34	10.0	10.9
	Not helpful at all	16	4.7	5.1
	Total	311	91.7	100.0
Missing	System	28	8.3	
Total		339	100.0	

How helpful was the advice you received from your dissertation/thesis adviser in each of these areas?
- Student wellness

		Frequency	Percent including missing data	Percent excluding missing data
Valid	Very helpful	174	51.3	54.4
	Somewhat helpful	104	30.7	32.5
	Not very helpful	24	7.1	7.5
	Not helpful at all	18	5.3	5.6
	Total	320	94.4	100.0
Missing	System	19	5.6	
Total		339	100.0	

Was there another faculty member who you considered to be a mentor (i.e., a faculty member who gave you advice about your education career development or other matters of concern to you as a graduate student)?

		Frequency	Percent including missing data	Percent excluding missing data
Valid	Yes	187	55.2	55.5
	No	150	44.2	44.5
	Total	337	99.4	100.0
Missing	System	2	.6	
Total		339	100.0	

Was the faculty mentor in your program/department?

Frequency			Percent including missing data	Percent excluding missing data
Valid	Yes	135	39.8	72.2
	No	52	15.3	27.8
	Total	187	55.2	100.0
Missing	System	152	44.8	
Total		339	100.0	

Was your faculty mentor assigned to you by someone at UT?

Frequency			Percent including missing data	Percent excluding missing data
Valid	Yes	22	6.5	11.8
	No	165	48.7	88.2
	Total	187	55.2	100.0
Missing	System	152	44.8	
Total		339	100.0	

How helpful was the advice you received from your faculty mentor in each of these areas?

- Selection of a dissertation topic

Frequency			Percent including missing data	Percent excluding missing data
Valid	Very helpful	99	29.2	62.7
	Somewhat helpful	44	13.0	27.8
	Not very helpful	8	2.4	5.1
	Not helpful at all	7	2.1	4.4
	Total	158	46.6	100.0
Missing	System	181	53.4	
Total		339	100.0	

How helpful was the advice you received from your faculty mentor in each of these areas?

- Your dissertation research

		Frequency	Percent including missing data	Percent excluding missing data
Valid	Very helpful	112	33.0	67.1
	Somewhat helpful	45	13.3	26.9
	Not very helpful	7	2.1	4.2
	Not helpful at all	3	.9	1.8
	Total	167	49.3	100.0
Missing	System	172	50.7	
Total		339	100.0	

How helpful was the advice you received from your faculty mentor in each of these areas?

- Writing and revising your dissertation

		Frequency	Percent including missing data	Percent excluding missing data
Valid	Very helpful	100	29.5	63.7
	Somewhat helpful	44	13.0	28.0
	Not very helpful	8	2.4	5.1
	Not helpful at all	5	1.5	3.2
	Total	157	46.3	100.0
Missing	System	182	53.7	
Total		339	100.0	

How helpful was the advice you received from your faculty mentor in each of these areas?

- Academic career options

		Frequency	Percent including missing data	Percent excluding missing data
Valid	Very helpful	101	29.8	63.9
	Somewhat helpful	48	14.2	30.4
	Not very helpful	8	2.4	5.1
	Not helpful at all	1	.3	.6
	Total	158	46.6	100.0
Missing	System	181	53.4	
Total		339	100.0	

How helpful was the advice you received from your faculty mentor in each of these areas?
- Nonacademic career options

		Frequency	Percent including missing data	Percent excluding missing data
Valid	Very helpful	73	21.5	52.5
	Somewhat helpful	39	11.5	28.1
	Not very helpful	18	5.3	12.9
	Not helpful at all	9	2.7	6.5
	Total	139	41.0	100.0
Missing	System	200	59.0	
Total		339	100.0	

How helpful was the advice you received from your faculty mentor in each of these areas?
- Search for employment or training

		Frequency	Percent including missing data	Percent excluding missing data
Valid	Very helpful	98	28.9	62.8
	Somewhat helpful	41	12.1	26.3
	Not very helpful	15	4.4	9.6
	Not helpful at all	2	.6	1.3
	Total	156	46.0	100.0
Missing	System	183	54.0	
Total		339	100.0	

How helpful was the advice you received from your faculty mentor in each of these areas?
- Student wellness

		Frequency	Percent including missing data	Percent excluding missing data
Valid	Very helpful	101	29.8	64.3
	Somewhat helpful	46	13.6	29.3
	Not very helpful	8	2.4	5.1
	Not helpful at all	2	.6	1.3
	Total	157	46.3	100.0
Missing	System	182	53.7	
Total		339	100.0	

Professional Development

Were you a teaching assistant (TA) at any time during your graduate studies?

		Frequency	Percent including missing data	Percent excluding missing data
Valid	Yes	280	82.6	89.2
	No	34	10.0	10.8
	Total	314	92.6	100.0
Missing	System	25	7.4	
Total		339	100.0	

Were you an assistant instructor (AI) at any time during your graduate studies?

		Frequency	Percent including missing data	Percent excluding missing data
Valid	Yes	82	24.2	26.1
	No	232	68.4	73.9
	Total	314	92.6	100.0
Missing	System	25	7.4	
Total		339	100.0	

Were you a research assistant (GRA) at any time during your graduate studies?

		Frequency	Percent including missing data	Percent excluding missing data
Valid	Yes	262	77.3	83.4
	No	52	15.3	16.6
	Total	314	92.6	100.0
Missing	System	25	7.4	
Total		339	100.0	

How helpful was this experience with respect to your professional development?

		Frequency	Percent including missing data	Percent excluding missing data
Valid	Very helpful	210	61.9	67.5
	Somewhat helpful	91	26.8	29.3
	Not very helpful	7	2.1	2.3
	Not at all helpful	3	.9	1.0
	Total	311	91.7	100.0
Missing	System	28	8.3	
Total		339	100.0	

Did you receive training in instructional methods/pedagogy at any time during your graduate studies?

		Frequency	Percent including missing data	Percent excluding missing data
Valid	Yes	235	69.3	69.3
	No	104	30.7	30.7
	Total	339	100.0	100.0

How helpful was this training?

		Frequency	Percent including missing data	Percent excluding missing data
Valid	Very helpful	110	32.4	46.8
	Somewhat helpful	97	28.6	41.3
	Not very helpful	22	6.5	9.4
	Not at all helpful	6	1.8	2.6
	Total	235	69.3	100.0
Missing	System	104	30.7	
Total		339	100.0	

How many research or scholarly presentations did you make on your campus during your graduate studies?

		Frequency	Percent including missing data	Percent excluding missing data
Valid	.00	56	16.5	16.6
	1.00	50	14.7	14.8
	2.00	58	17.1	17.2
	3.00	57	16.8	16.9
	4.00	26	7.7	7.7
	5.00	22	6.5	6.5
	6.00	13	3.8	3.9
	7.00	9	2.7	2.7
	8.00	9	2.7	2.7
	9.00	2	.6	.6
	10.00	35	10.3	10.4
	Total	337	99.4	100.0
Missing	System	2	.6	
Total		339	100.0	

How many research or scholarly presentations did you make at meetings away from your campus (regional, national or international)?

			Percent including missing data	Percent excluding missing data
		Frequency		
Valid	.00	18	5.3	5.3
	1.00	27	8.0	8.0
	2.00	33	9.7	9.8
	3.00	33	9.7	9.8
	4.00	49	14.5	14.5
	5.00	31	9.1	9.2
	6.00	26	7.7	7.7
	7.00	19	5.6	5.6
	8.00	15	4.4	4.4
	9.00	9	2.7	2.7
	10.00	78	23.0	23.1
	Total	338	99.7	100.0
Missing	System	1	.3	
Total		339	100.0	

Did you receive institutional or research funds for traveling away from campus for a research or scholarly presentation?

			Percent including missing data	Percent excluding missing data
		Frequency		
Valid	Yes, I received travel funds for one or more presentations I made away from campus.	279	82.3	87.2
	No	41	12.1	12.8
	Total	320	94.4	100.0
Missing	System	19	5.6	
Total		339	100.0	

Select the sources of your travel funds: (select all that apply) Your program

		Frequency	Percent including missing data	Percent excluding missing data
Valid	Your program	212	62.5	100.0
Missing	System	127	37.5	
Total		339	100.0	

Select the sources of your travel funds: (select all that apply) A research grant

		Frequency	Percent including missing data	Percent excluding missing data
Valid	A research grant	127	37.5	100.0
Missing	System	212	62.5	
Total		339	100.0	

Select the sources of your travel funds: (select all that apply) Other institutional funds

		Frequency	Percent including missing data	Percent excluding missing data
Valid	Other institutional funds	96	28.3	100.0
Missing	System	243	71.7	
Total		339	100.0	

Based on research conducted while you were a graduate student, how many published scholarly works have you authored or co-authored?

		Frequency	Percent including missing data	Percent excluding missing data
Valid	.00	42	12.4	12.4
	1.00	50	14.7	14.7
	2.00	47	13.9	13.9
	3.00	38	11.2	11.2
	4.00	41	12.1	12.1
	5.00	31	9.1	9.1
	6.00	17	5.0	5.0
	7.00	18	5.3	5.3
	8.00	11	3.2	3.2
	9.00	5	1.5	1.5
	10.00	39	11.5	11.5
	Total	339	100.0	100.0

Based on research conducted while you were a graduate student, how many published (or accepted for publication) non-scholarly works have you authored or co-authored (e.g., magazine articles)?

		Frequency	Percent including missing data	Percent excluding missing data
Valid	0	257	75.8	76.3
	1	31	9.1	9.2
	2	16	4.7	4.7
	3	10	2.9	3.0
	4	6	1.8	1.8
	5	2	.6	.6
	6	4	1.2	1.2
	8	1	.3	.3
	9	1	.3	.3
	10 or more	9	2.7	2.7
	Total	337	99.4	100.0
Missing	System	2	.6	
Total		339	100.0	

How many others are currently under review?

			Percent including missing data	Percent excluding missing data
		Frequency		
Valid	.00	108	31.9	32.0
	1.00	101	29.8	29.9
	2.00	78	23.0	23.1
	3.00	35	10.3	10.4
	4.00	8	2.4	2.4
	5.00	3	.9	.9
	6.00	2	.6	.6
	8.00	2	.6	.6
	10.00	1	.3	.3
	Total	338	99.7	100.0
Missing	System	1	.3	
Total		339	100.0	

Climate & Obstacles to Success

To what extent do you agree or disagree with each of the following statements?

- Students in my program are treated with respect by faculty.

		Frequency	Percent including missing data	Percent excluding missing data
Valid	Strongly agree	150	44.2	44.2
	Agree	121	35.7	35.7
	Neutral	43	12.7	12.7
	Disagree	17	5.0	5.0
	Strongly disagree	8	2.4	2.4
	Total	339	100.0	100.0

To what extent do you agree or disagree with each of the following statements?

- The intellectual climate of my program is positive.

		Frequency	Percent including missing data	Percent excluding missing data
Valid	Strongly agree	153	45.1	45.1
	Agree	131	38.6	38.6
	Neutral	35	10.3	10.3
	Disagree	16	4.7	4.7
	Strongly disagree	4	1.2	1.2
	Total	339	100.0	100.0

To what extent do you agree or disagree with each of the following statements?
- The social climate of my program is positive.

		Frequency	Percent including missing data	Percent excluding missing data
Valid	Strongly agree	118	34.8	34.9
	Agree	133	39.2	39.3
	Neutral	58	17.1	17.2
	Disagree	20	5.9	5.9
	Strongly disagree	9	2.7	2.7
	Total	338	99.7	100.0
Missing	System	1	.3	
Total		339	100.0	

To what extent do you agree or disagree with each of the following statements?
- Students in my program are collegial.

		Frequency	Percent including missing data	Percent excluding missing data
Valid	Strongly agree	159	46.9	47.0
	Agree	151	44.5	44.7
	Neutral	21	6.2	6.2
	Disagree	2	.6	.6
	Strongly disagree	5	1.5	1.5
	Total	338	99.7	100.0
Missing	System	1	.3	
Total		339	100.0	

To what extent do you agree or disagree with each of the following statements?

- My doctoral program fosters an environment that respects diversity, equity, and inclusion.

		Frequency	Percent including missing data	Percent excluding missing data
Valid	Strongly agree	145	42.8	42.8
	Agree	120	35.4	35.4
	Neutral	51	15.0	15.0
	Disagree	16	4.7	4.7
	Strongly disagree	7	2.1	2.1
	Total	339	100.0	100.0

Please indicate the extent to which the following factors were an obstacle to your academic progress.

- Work/financial commitments

		Frequency	Percent including missing data	Percent excluding missing data
Valid	Very significant	80	23.6	25.2
	Somewhat significant	96	28.3	30.2
	Not very significant	142	41.9	44.7
	Total	318	93.8	100.0
Missing	System	21	6.2	
Total		339	100.0	

Please indicate the extent to which the following factors were an obstacle to your academic progress.

- Family obligations

		Frequency	Percent including missing data	Percent excluding missing data
Valid	Very significant	61	18.0	20.0
	Somewhat significant	79	23.3	25.9
	Not very significant	165	48.7	54.1
	Total	305	90.0	100.0
Missing	System	34	10.0	
Total		339	100.0	

Please indicate the extent to which the following factors were an obstacle to your academic progress.
- Availability of faculty

		Frequency	Percent including missing data	Percent excluding missing data
Valid	Very significant	38	11.2	12.0
	Somewhat significant	86	25.4	27.1
	Not very significant	193	56.9	60.9
	Total	317	93.5	100.0
Missing	System	22	6.5	
Total		339	100.0	

Please indicate the extent to which the following factors were an obstacle to your academic progress.
- Program structure or requirements

		Frequency	Percent including missing data	Percent excluding missing data
Valid	Very significant	39	11.5	12.3
	Somewhat significant	89	26.3	28.0
	Not very significant	190	56.0	59.7
	Total	318	93.8	100.0
Missing	System	21	6.2	
Total		339	100.0	

Please indicate the extent to which the following factors were an obstacle to your academic progress.
- Course scheduling

		Frequency	Percent including missing data	Percent excluding missing data
Valid	Very significant	28	8.3	8.8
	Somewhat significant	68	20.1	21.3
	Not very significant	224	66.1	70.0
	Total	320	94.4	100.0
Missing	System	19	5.6	
Total		339	100.0	

Please indicate the extent to which the following factors were an obstacle to your academic progress.
- Immigration laws or regulations

		Frequency	Percent including missing data	Percent excluding missing data
Valid	Very significant	41	12.1	22.2
	Somewhat significant	52	15.3	28.1
	Not very significant	92	27.1	49.7
	Total	185	54.6	100.0
Missing	System	154	45.4	
Total		339	100.0	

Postgraduate Plans

What is the status of your postgraduate plans (in the next year)? Mark one.

		Frequency	Percent including missing data	Percent excluding missing data
Valid	Returning to, or continuing in, predoctoral employment	15	4.4	4.4
	Have signed a contract or made a definite commitment for a "postdoc"	85	25.1	25.1
	Have signed a contract or made a definite commitment for other work (e.g., research job in industry, etc.)	142	41.9	41.9
	Negotiating with one or more specific organizations	29	8.6	8.6
	Seeking position but have no specific prospects	43	12.7	12.7
	Do not plan to work or study (e.g., family commitments, etc.)	2	.6	.6
	Other	23	6.8	6.8
Total		339	100.0	100.0

Which best describes the position you have/plan for next year?

		Frequency	Percent including missing data	Percent excluding missing data
Valid	Employed by an organization (full-time or part-time)	157	46.3	100.0
Missing	System	182	53.7	
Total		339	100.0	

Only asked to those who reported employment of some kind.

Please tell us more about your self-employment. Are you:

		Frequency	Percent including missing data
Missing	System	339	100.0

Only asked to those who reported employment of some kind. However, no one selected self-employment as a description of their employment.

How would you characterize the type of employer you will be/plan to be working for next year?

		Frequency	Percent including missing data	Percent excluding missing data
Valid	Academic institution or research institution	48	14.2	30.6
	Industry/for-profit organization	95	28.0	60.5
	Non-profit, non-government organization	9	2.7	5.7
	Government, elected or civil service	5	1.5	3.2
	Total	157	46.3	100.0
Missing	System	182	53.7	
Total		339	100.0	

Only asked of those who reported 'employed by an organization' or 'other' as a form of employment.

Will you be conducting research in the same subject area as your doctoral degree as part of your employment?

		Frequency	Percent including missing data	Percent excluding missing data
Valid	Yes	181	53.4	75.1
	No	60	17.7	24.9
	Total	241	71.1	100.0
Missing	System	98	28.9	
Total		339	100.0	

Only asked of those who reported employment or a postdoc.

What type of appointment do you have/plan to have?

		Frequency	Percent including missing data	Percent excluding missing data
Valid	Tenure-track faculty appointment	24	7.1	50.0
	Non-tenure track faculty appointment	10	2.9	20.8
	Administrative	4	1.2	8.3
	Other	10	2.9	20.8
	Total	48	14.2	100.0
Missing	System	291	85.8	
Total		339	100.0	

Only asked of those who reported employment with an Academic institution or research institution.

Will you primarily be working in the U.S.?

Frequency			Percent including missing data	Percent excluding missing data
Valid	Yes	220	64.9	90.9
	No	22	6.5	9.1
	Total	242	71.4	100.0
Missing	System	97	28.6	
Total		339	100.0	

Only asked of those who reported employment or a post-doc.

I feel well prepared to succeed post-graduation.

Frequency			Percent including missing data	Percent excluding missing data
Valid	Strongly agree	163	48.1	48.2
	Agree	139	41.0	41.1
	Neutral	29	8.6	8.6
	Disagree	5	1.5	1.5
	Strongly disagree	2	.6	.6
	Total	338	99.7	100.0
Missing	System	1	.3	
Total		339	100.0	

How likely are you to recommend UT Austin to a friend or colleague seeking a doctoral degree?

- Group

Frequency			Percent including missing data	Percent excluding missing data
Valid	Detractor	72	21.2	21.2
	Passive	105	31.0	31.0
	Promoter	162	47.8	47.8
	Total	339	100.0	100.0

How likely are you to recommend UT Austin to a friend or colleague seeking a doctoral degree?

		Frequency	Percent including missing data	Percent excluding missing data
Valid	0	4	1.2	1.2
	1	4	1.2	1.2
	2	9	2.7	2.7
	3	8	2.4	2.4
	4	3	.9	.9
	5	10	2.9	2.9
	6	34	10.0	10.0
	7	38	11.2	11.2
	8	67	19.8	19.8
	9	53	15.6	15.6
	10	109	32.2	32.2
	Total	339	100.0	100.0